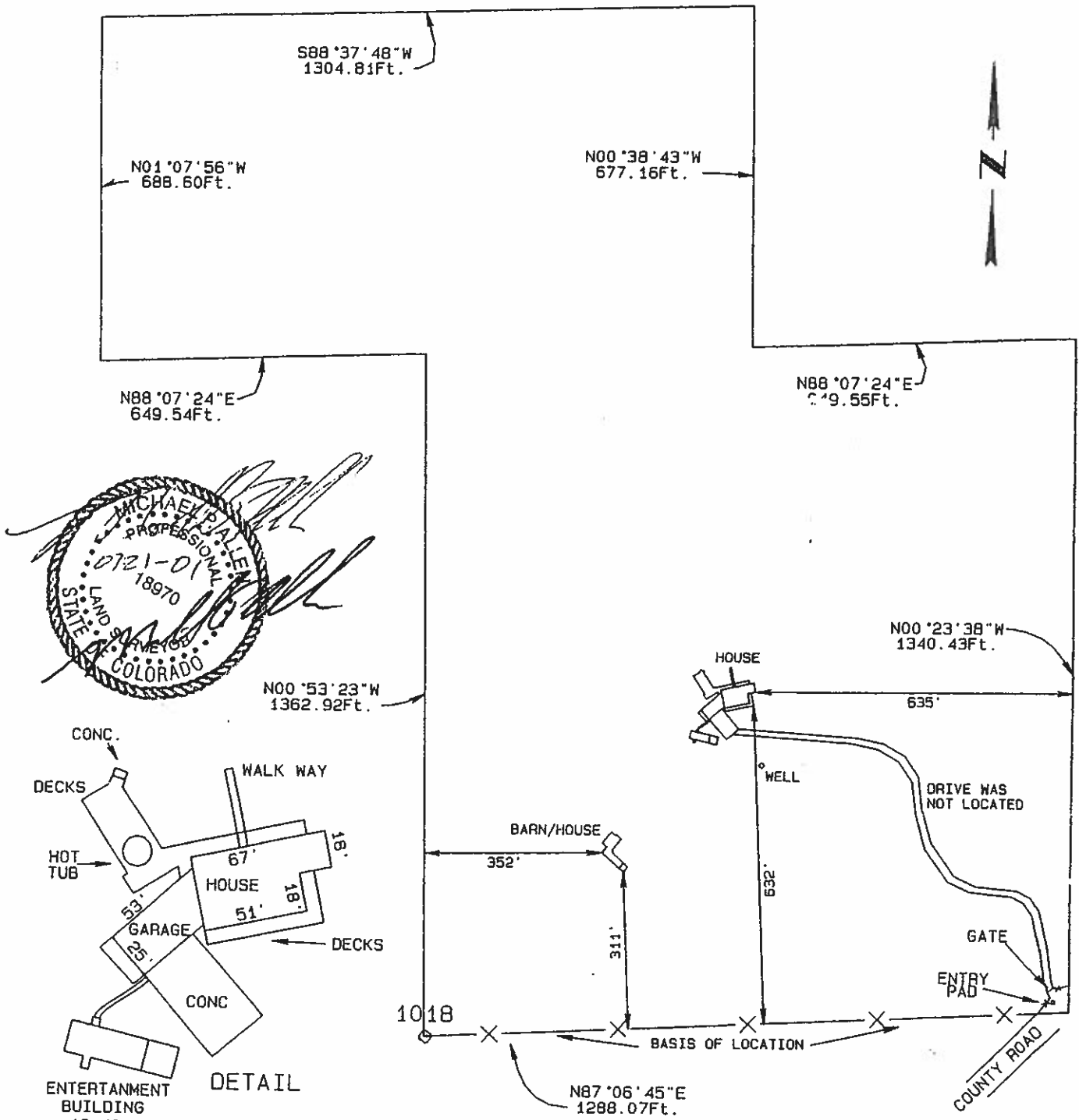


IMPROVEMENT LOCATION CERTIFICATE



Parcel 11

A parcel of land located in the SE1/4 Section 1, T35N, R3W, N.M.F.N., Archuleta County, Colorado and being more particularly described as follows:

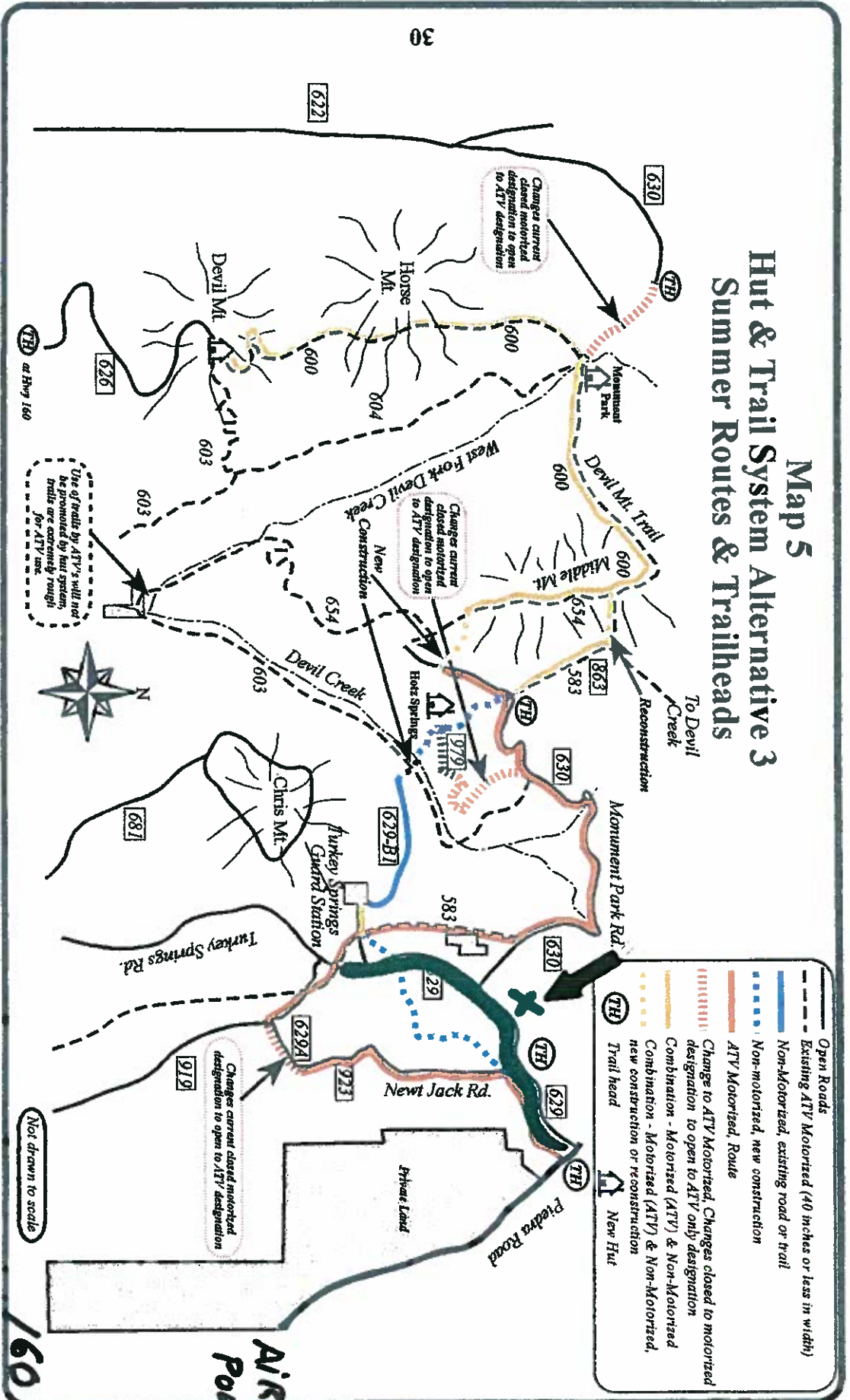
Commencing at the SE corner of said Section 1; Thence, N 00 degrees 08 minutes 24 seconds W along the east line of said Section 1 a distance of 1329.28 feet to the SE corner of NE1/4 SE1/4 of Section 1 and the True Point of Beginning;

Thence, S 88 degrees 07 minutes 24 seconds W, a distance of 1299.09 feet; Thence N 00 degrees 36 minutes 43 seconds W, a distance of 677.16 feet; Thence, S 80 degrees 37 minutes 48 seconds W, a distance of 1304.81 feet to a point on the N-S midsection line of said Section 1; Thence, N 01 degree 07 minutes 56 seconds W, a distance of 688.60 feet along said N-S midsection line to the center of said Section 1; Thence, N 89 degrees 07 minutes 38 seconds E along the E-W midsection line a distance of 2621.08 feet to the E1/4 corner of said Section 1; Thence, S 00 degrees 08 minutes 24 seconds E along the east line of said Section 1 a distance of 1328.54 feet to the True point of beginning;

LESS AND EXCEPT that parcel described in deed recorded August 31, 1992 in book 381 Page 315 in the office of the Clerk and Recorder, Archuleta County, Colorado.

FOR AND ON BEHALF OF F R D SOUTH INC
 THIS IS TO CERTIFY THAT ON 07-21-01 ALL IMPROVEMENTS WERE LOCATED AND SHOWN ON THIS MAP, AND THAT ALL BEARINGS AND DISTANCES SHOWN ARE FROM THE OFFICIAL RECORDED PLAT. I FURTHER CERTIFY THAT THIS MAP

Map 5 Hut & Trail System Alternative 3 Summer Routes & Trailheads



- Open Roads
- Existing ATV Motorized (40 inches or less in width)
- Non-Motorized, existing road or trail
- Non-motorized, new construction
- ATV Motorized, new construction
- Change to ATV Motorized, Changes closed to motorized designation to open to ATV only designation
- Combination - Motorized (ATV) & Non-Motorized
- Combination - Motorized (ATV) & Non-Motorized, new construction or reconstruction
- Trail head
- New Hut

Change current closed motorized designation to open to ATV designation

Change current closed motorized designation to open to ATV designation

Change current closed motorized designation to open to ATV designation

Use of trails by ATV's will not be promoted by trail system, trails are extremely rough for ATV use.

Reconstruction

To Devil Creek

New Construction

Not drawn to scale

AIR POOL